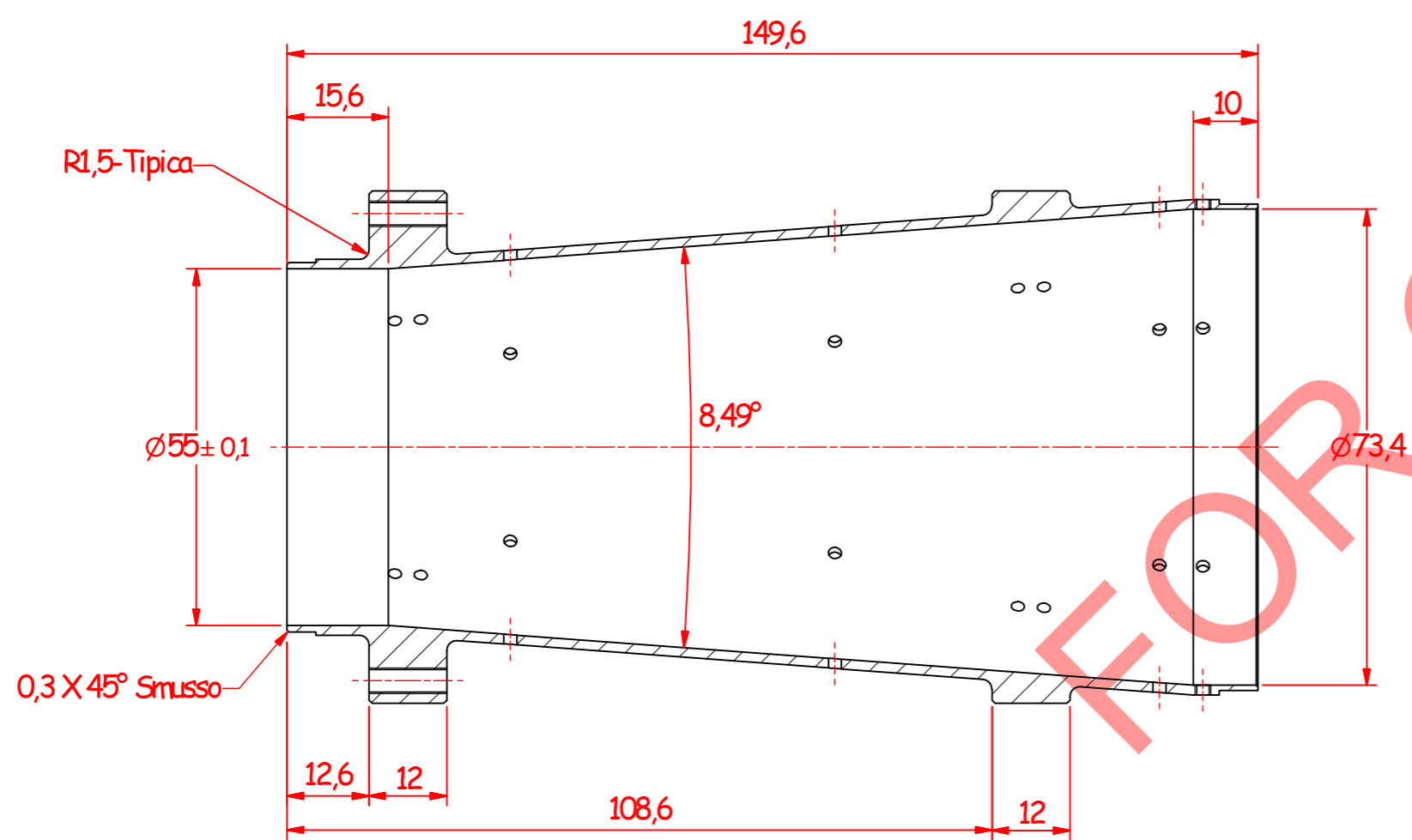
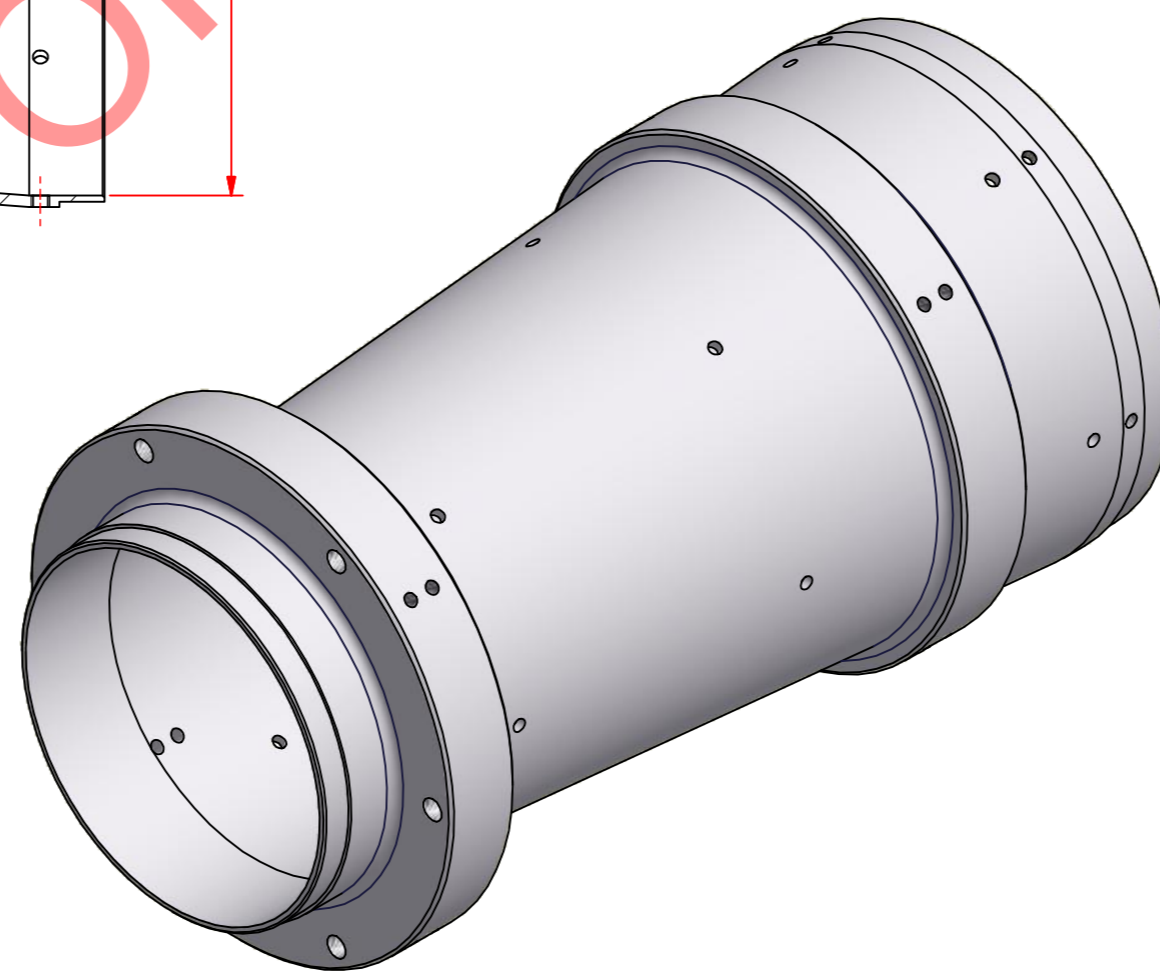


F-F(1:1)


G-G(1:1)



D-D(1:1)



- NOTE:
 1. ALL VACUUM SURFACES ROUGHNESS SHOULD BE BETTER THAN 0.4 Ra
 2. NO SHARP PERMITTED
 3. SEE TECHNICAL SPECIFICATION "DAFNEUP-000-000"

04	DAFNEUP2-003-000	2		 NATIONAL INSTITUTE OF NUCLEAR PHYSICS FRASCATI NATIONAL LABORATORY ACCELERATOR DIVISION
FINISH	NEXT ASSY DWG	QUANT.	NOTE	
GENERAL TOLERANCES UNI EN 22768/1-MEDIUM				DAFNE
03/10/2008	AL 6082 T6		1:2	IR1 KLOEUP 2009
DATE	MATERIAL	WEIGHT	SCALE	IR SFERE CHAMBER ASSY
				TAPERED CHAMBER
VACUUM	DIAGNOSTIC	ACC.PHY.	ELEC. ENG.	
QUALITY ASSURANCE				A2
	SENSOLINI			Foglio N
DRAFTER	DESIGNER	ENGINEER	APPROVAL	1/1
				DRAWING N.
				DAFNEUP2-003-004
				REV
				B