

Frascati, July 27, 1995

Note: **ME-4**

UPDATE TO ME-3

Coordinates of DAΦNE Main Rings Magnetic Elements

C. Biscari, F. Sgamma

We include the updated list and drawings of the coordinates of DAΦNE elements as specified in ME-3.

The positions of correctors CHVEI101, CHVEI102, CHVEI201, CHVEI202, CHVPI101, CHVPI102, CHVPI201, CHVPI202 and of quadrupoles QUAES108, QUAES202, QUAPS108, QUAPS202 have been modified.

Each IR can house one of two different structures: in IR1 the Day One(1) or the KLOE detector can be mounted, in IR2 the Day One(2) or the FI.NU.DA. detector.

When passing from one configuration to another in an IR only the central part, 6.7052 m around the IP, will be replaced, while the outer parts remain fixed.

The interface points between these two parts correspond to valves, whose position coordinates have been now specified.

DAΦNE

Coordinate degli elementi magnetici

	coord. curv.	angolo	lung. mag.	ang. progr.	X	Y	
EL1	INEZIONE	0.000	0.000	0.00	0.00	-16254.38	
	QUAEL101	1877.588	1877.588	0.00	1877.59	-16254.38	
		2177.588	300.000	0.00	2177.59	-16254.38	
	CHVEL101	2342.588	165.000	0.00	2342.59	-16254.38	
		2442.588	100.000	0.00	2442.59	-16254.38	
	QUAEL102	2627.588	185.000	0.00	2627.59	-16254.38	
		2927.588	300.000	0.00	2927.59	-16254.38	
	CHVEL102	4272.588	1345.000	0.00	4272.59	-16254.38	
		4372.588	100.000	0.00	4372.59	-16254.38	
	QUAEL103	4467.588	95.000	0.00	4467.59	-16254.38	
		4767.588	300.000	0.00	4767.59	-16254.38	
	QUAEL104	5547.588	780.000	0.00	5547.59	-16254.38	
		5847.588	300.000	0.00	5847.59	-16254.38	
	SXPEL101	5997.588	150.000	0.00	5997.59	-16254.38	
		6097.588	100.000	0.00	6097.59	-16254.38	
	CHVEL103	6633.588	536.000	0.00	6633.59	-16254.38	
		6833.588	200.000	0.00	6833.59	-16254.38	
	DHREL101	7197.588	364.000	0.00	7197.59	-16254.38	
		8407.588	49.50000	1210.000	49.50	8262.58	-15763.41
	QUAEL105	9007.588	600.000	49.50	8652.25	-15307.16	
		9307.588	300.000	49.50	8847.09	-15079.04	
	CHVEL104	9382.588	75.000	49.50	8895.80	-15022.01	
		9482.588	100.000	49.50	8960.74	-14945.97	
	SXPEL102	9607.588	125.000	49.50	9041.92	-14850.92	
		9757.588	150.000	49.50	9139.34	-14736.86	
	WGLEL101	9907.588	150.000	49.50	9236.76	-14622.80	
		11907.588	2000.000	49.50	10535.65	-13101.98	
	QUAEL106	12507.588	600.000	49.50	10925.32	-12645.74	
		12807.588	300.000	49.50	11120.16	-12417.62	
	CHVEL105	12897.588	90.000	49.50	11178.61	-12349.18	
		12997.588	100.000	49.50	11243.55	-12273.14	
	SXPEL103	13132.588	135.000	49.50	11331.23	-12170.49	
		13282.588	150.000	49.50	11428.64	-12056.43	
	QUAEL107	13407.588	125.000	49.50	11509.83	-11961.38	
		13707.588	300.000	49.50	11704.66	-11733.25	
	DHSEL102	14307.588	600.000	49.50	12094.33	-11277.01	
		15517.588	49.50000	1210.000	99.00	12412.65	-10148.32
	CHVEL106	15881.588	364.000	99.00	12355.71	-9788.80	
		16081.588	200.000	99.00	12324.42	-9591.26	
	QUAEL108	16317.588	236.000	99.00	12287.50	-9358.17	
		16617.588	300.000	99.00	12240.57	-9061.86	
	SXPEL104	16977.588	360.000	99.00	12184.26	-8706.30	
		17077.588	100.000	99.00	12168.61	-8607.53	
	QUAEL109	17197.588	120.000	99.00	12149.84	-8489.00	
		17497.588	300.000	99.00	12102.91	-8192.70	
	QUAEL110	17917.588	420.000	99.00	12037.21	-7777.87	
		18217.588	300.000	99.00	11990.28	-7481.56	
	DHCEL101	18358.588	141.000	99.00	11968.22	-7342.30	
		18686.588	328.000	99.00	11916.91	-7018.34	
	SPLI1001	19217.588	531.000	99.00	11833.84	-6493.87	
		20667.588	-8.74933	1450.000	90.25	11717.03	-5050.00

DAΦNE

Coordinate degli elementi magnetici

	coor. curv.	angolo	lung. mag.	ang. progr.	X	Y
IR1	OFFSET	20667.588	-0.25067	0.000	90.00	11658.28 -5050.00
	CHVEI101	20768.088		100.500	90.00	11658.28 -4949.50
		21008.088		240.000	90.00	11658.28 -4709.50
	SOLI1001	21082.588		74.500	90.00	11658.28 -4635.00
		22232.588		1150.000	90.00	11658.28 -3485.00
	VALV	22364.988	0.00000	132.400	90.00	11658.28 -3352.60
	QUAI1001	23517.588		1152.600	90.00	11658.28 -2200.00
		23917.588		400.000	90.00	11658.28 -1800.00
	QUAI1002	24267.588		350.000	90.00	11658.28 -1450.00
		24667.588		400.000	90.00	11658.28 -1050.00
	QUAI1003	24967.588		300.000	90.00	11658.28 -750.00
		25267.588		300.000	90.00	11658.28 -450.00
	QUAI1004	25567.588		300.000	90.00	11658.28 -150.00
		25867.588		300.000	90.00	11658.28 150.00
	QUAI1005	26167.588		300.000	90.00	11658.28 450.00
		26467.588		300.000	90.00	11658.28 750.00
	QUAI1006	26767.588		300.000	90.00	11658.28 1050.00
		27167.588		400.000	90.00	11658.28 1450.00
	QUAI1007	27517.588		350.000	90.00	11658.28 1800.00
		27917.588		400.000	90.00	11658.28 2200.00
	VALV	29070.188	0.00000	1152.600	90.00	11658.28 3352.60
	SOLI1002	29202.588		132.400	90.00	11658.28 3485.00
		30352.588		1150.000	90.00	11658.28 4635.00
	CHVEI102	30427.088		74.500	90.00	11658.28 4709.50
		30667.088		240.000	90.00	11658.28 4949.50
	OFFSET	30767.588	0.25067	100.500	90.25	11599.53 5050.00

DAΦNE

Coordinate degli elementi magnetici

	coor. curv.	angolo	lung. mag.	ang. progr.	X	Y
ES1	SPLI1002		0.000	90.25	11599.53	5050.00
		30767.588				
		8.74933	1450.000	99.00	11482.72	6493.87
	DHCES101		531.000	99.00	11399.65	7018.34
		32748.588				
		33076.588	328.000	99.00	11348.34	7342.30
	QUAES101		141.000	99.00	11326.28	7481.56
		33217.588				
		33517.588	300.000	99.00	11279.35	7777.87
	SXPES101		125.000	99.00	11259.80	7901.33
		33642.588				
		33792.588	150.000	99.00	11236.33	8049.48
	QUAES102		125.000	99.00	11216.78	8172.94
		33917.588				
		34217.588	300.000	99.00	11169.85	8469.25
	QUAES103		600.000	99.00	11075.99	9061.86
		34817.588				
		35117.588	300.000	99.00	11029.06	9358.17
	CHVES101		236.000	99.00	10992.14	9591.26
		35353.588				
		35553.588	200.000	99.00	10960.85	9788.80
	DHSES101		364.000	99.00	10903.91	10148.32
		35917.588				
		36907.588	40.50000	139.50	10430.18	10994.22
	QUAES104		600.000	139.50	9973.94	11383.89
		37507.588				
		37807.588	300.000	139.50	9745.82	11578.72
	SXPES102		125.000	139.50	9650.77	11659.91
		37932.588				
		38082.588	150.000	139.50	9536.70	11757.32
	CHVES102		135.000	139.50	9434.05	11845.00
		38217.588				
		38317.588	100.000	139.50	9358.01	11909.94
	QUAES105		90.000	139.50	9289.57	11968.39
		38407.588				
		38707.588	300.000	139.50	9061.45	12163.23
	WGLS101		600.000	139.50	8605.21	12552.90
		39307.588				
		41307.588	2000.000	139.50	7084.40	13851.79
	SXPES103		150.000	139.50	6970.33	13949.21
		41457.588				
		41607.588	150.000	139.50	6856.27	14046.63
	CHVES103		125.000	139.50	6761.22	14127.81
		41732.588				
		41832.588	100.000	139.50	6685.18	14192.75
	QUAES106		75.000	139.50	6628.15	14241.46
		41907.588				
		42207.588	300.000	139.50	6400.03	14436.30
	DHRES102		600.000	139.50	5943.79	14825.96
		42807.588				
		43797.588	40.50000	180.00	5034.19	15161.53
	CHVES104		364.000	180.00	4670.19	15161.53
		44161.588				
		44361.588	200.000	180.00	4470.19	15161.53
	QUAES107		186.000	180.00	4284.19	15161.53
		44547.588				
		44847.588	300.000	180.00	3984.19	15161.53
	SXPES104		165.000	180.00	3819.19	15161.53
		45012.588				
		45112.588	100.000	180.00	3719.19	15161.53
	QUAES108		122.000	180.00	3597.19	15161.53
		45234.588				
		45534.588	300.000	180.00	3297.19	15161.53
	RFCES101		88.000	180.00	3209.19	15161.53
		45622.588				
		47462.588	1840.000	180.00	1369.19	15161.53
	CHVES105		105.000	180.00	1264.19	15161.53
		47567.588				
		47667.588	100.000	180.00	1164.19	15161.53
	QUAES109		100.000	180.00	1064.19	15161.53
		47767.588				
		48067.588	300.000	180.00	764.19	15161.53
	CHVES106		414.193	180.00	350.00	15161.53
		48481.781				
		48581.781	100.000	180.00	250.00	15161.53
	QUAES110		100.000	180.00	150.00	15161.53
		48681.781				
		48981.781	300.000	180.00	-150.00	15161.53

DAΦNE

Coordinate degli elementi magnetici

	coor. curv.	angolo	lung. mag.	ang. progr.	X	Y
ES2	QUAES201	49595.974	614.193	180.00	-764.19	15161.53
		49895.974	300.000	180.00	-1064.19	15161.53
	CHVES201	51915.974	2020.000	180.00	-3084.19	15161.53
		52015.974	100.000	180.00	-3184.19	15161.53
	QUAES202	52128.974	113.000	180.00	-3297.19	15161.53
		52428.974	300.000	180.00	-3597.19	15161.53
	SXPES201	52550.974	122.000	180.00	-3719.19	15161.53
		52650.974	100.000	180.00	-3819.19	15161.53
	QUAES203	52815.974	165.000	180.00	-3984.19	15161.53
		53115.974	300.000	180.00	-4284.19	15161.53
	CHVES202	53301.974	186.000	180.00	-4470.19	15161.53
		53501.974	200.000	180.00	-4670.19	15161.53
	DHRES201	53865.974	364.000	180.00	-5034.19	15161.53
		54855.974	40.50000	990.000	220.50	-5943.79
	QUAES204	55455.974	600.000	220.50	-6400.03	14436.30
		55755.974	300.000	220.50	-6628.15	14241.46
	CHVES203	55830.974	75.000	220.50	-6685.18	14192.75
		55930.974	100.000	220.50	-6761.22	14127.81
	SXPES202	56055.974	125.000	220.50	-6856.27	14046.63
		56205.974	150.000	220.50	-6970.33	13949.21
	WGLES201	56355.974	150.000	220.50	-7084.39	13851.79
		58355.974	2000.000	220.50	-8605.21	12552.90
	QUAES205	58955.974	600.000	220.50	-9061.45	12163.23
		59255.974	300.000	220.50	-9289.57	11968.39
	CHVES204	59345.974	90.000	220.50	-9358.01	11909.94
		59445.974	100.000	220.50	-9434.05	11845.00
	SXPES203	59580.974	135.000	220.50	-9536.70	11757.32
		59730.974	150.000	220.50	-9650.76	11659.91
	QUAES206	59855.974	125.000	220.50	-9745.82	11578.72
		60155.974	300.000	220.50	-9973.94	11383.89
	DHSES202	60755.974	600.000	220.50	-10430.18	10994.22
		61745.974	40.50000	990.000	261.00	-10903.91
	CHVES205	62109.974	364.000	261.00	-10960.85	9788.80
		62309.974	200.000	261.00	-10992.14	9591.26
	QUAES207	62545.974	236.000	261.00	-11029.06	9358.17
		62845.974	300.000	261.00	-11075.99	9061.86
	QUAES208	63445.974	600.000	261.00	-11169.85	8469.25
		63745.974	300.000	261.00	-11216.78	8172.94
	SXPES204	63870.974	125.000	261.00	-11236.33	8049.48
		64020.974	150.000	261.00	-11259.80	7901.33
	QUAES209	64145.974	125.000	261.00	-11279.35	7777.87
		64445.974	300.000	261.00	-11326.28	7481.56
	DHCES201	64586.974	141.000	261.00	-11348.34	7342.30
		64914.974	328.000	261.00	-11399.65	7018.34
	SPLI2001	65445.974	531.000	261.00	-11482.72	6493.87
		66895.974	8.74933	1450.000	269.75	-11599.53

DAΦNE

Coordinate degli elementi magnetici

	coord. curv.	angolo	lung. mag.	ang. progr.	X	Y
IR2	OFFSET	66895.974	0.25067	0.000	270.00	-11658.28 5050.00
	CHVEI201	66996.474		100.500	270.00	-11658.28 4949.50
		67236.474		240.000	270.00	-11658.28 4709.50
	SOLI2001	67310.974		74.500	270.00	-11658.28 4635.00
		68460.974		1150.000	270.00	-11658.28 3485.00
	VALV	68593.374	0.00000	132.400	270.00	-11658.28 3352.60
	QUAI2001	69745.974		1152.600	270.00	-11658.28 2200.00
		70145.974		400.000	270.00	-11658.28 1800.00
	QUAI2002	70495.974		350.000	270.00	-11658.28 1450.00
		70895.974		400.000	270.00	-11658.28 1050.00
	QUAI2003	71195.974		300.000	270.00	-11658.28 750.00
		71495.974		300.000	270.00	-11658.28 450.00
	QUAI2004	71795.974		300.000	270.00	-11658.28 150.00
		72095.974		300.000	270.00	-11658.28 -150.00
	QUAI2005	72395.974		300.000	270.00	-11658.28 -450.00
		72695.974		300.000	270.00	-11658.28 -750.00
	QUAI2006	72995.974		300.000	270.00	-11658.28 -1050.00
		73395.974		400.000	270.00	-11658.28 -1450.00
	QUAI2007	73745.974		350.000	270.00	-11658.28 -1800.00
		74145.974		400.000	270.00	-11658.28 -2200.00
	VALV	75298.574	0.00000	1152.600	270.00	-11658.28 -3352.60
	SOLI2002	75430.974		132.400	270.00	-11658.28 -3485.00
		76580.974		1150.000	270.00	-11658.28 -4635.00
	CHVEI202	76655.474		74.500	270.00	-11658.28 -4709.50
		76895.474		240.000	270.00	-11658.28 -4949.50
	OFFSET	76995.974	-0.25067	100.500	269.75	-11717.03 -5050.00

DAΦNE

Coordinate degli elementi magnetici

	coor. curv.	angolo	lung. mag.	ang. progr.	X	Y
EL2	SPLI2002	76995.974	0.000	269.75	-11717.03	-5050.00
		78445.974	-8.74933	1450.000	261.00	-11833.84
DHCEL201		78976.974	531.000	261.00	-11916.91	-7018.34
		79304.974	328.000	261.00	-11968.22	-7342.30
QUAEL201		79445.974	141.000	261.00	-11990.28	-7481.56
		79745.974	300.000	261.00	-12037.21	-7777.87
QUAEL202		80165.974	420.000	261.00	-12102.91	-8192.70
		80465.974	300.000	261.00	-12149.84	-8489.00
SXPEL201		80585.974	120.000	261.00	-12168.61	-8607.53
		80685.974	100.000	261.00	-12184.26	-8706.30
QUAEL203		81045.974	360.000	261.00	-12240.57	-9061.86
		81345.974	300.000	261.00	-12287.50	-9358.17
CHVEL201		81581.974	236.000	261.00	-12324.42	-9591.26
		81781.974	200.000	261.00	-12355.71	-9788.80
DHSEL201		82145.974	364.000	261.00	-12412.65	-10148.32
		83355.974	49.50000	1210.000	310.50	-12094.33
QUAEL204		83955.974	600.000	310.50	-11704.66	-11733.25
		84255.974	300.000	310.50	-11509.82	-11961.38
SXPEL202		84380.974	125.000	310.50	-11428.64	-12056.43
		84530.974	150.000	310.50	-11331.23	-12170.49
CHVEL202		84665.974	135.000	310.50	-11243.55	-12273.14
		84765.974	100.000	310.50	-11178.61	-12349.18
QUAEL205		84855.974	90.000	310.50	-11120.16	-12417.62
		85155.974	300.000	310.50	-10925.32	-12645.74
WGLEL201		85755.974	600.000	310.50	-10535.65	-13101.98
		87755.974	2000.000	310.50	-9236.76	-14622.80
SXPEL203		87905.974	150.000	310.50	-9139.34	-14736.86
		88055.974	150.000	310.50	-9041.92	-14850.92
CHVEL203		88180.974	125.000	310.50	-8960.74	-14945.97
		88280.974	100.000	310.50	-8895.80	-15022.01
QUAEL206		88355.974	75.000	310.50	-8847.09	-15079.04
		88655.974	300.000	310.50	-8652.25	-15307.16
DHREL202		89255.974	600.000	310.50	-8262.58	-15763.41
		90465.974	49.50000	1210.000	360.00	-7197.59
CHVEL204		90829.974	364.000	360.00	-6833.59	-16254.38
		91029.974	200.000	360.00	-6633.59	-16254.38
SXPEL204		91565.974	536.000	360.00	-6097.59	-16254.38
		91665.974	100.000	360.00	-5997.59	-16254.38
QUAEL207		91815.974	150.000	360.00	-5847.59	-16254.38
		92115.974	300.000	360.00	-5547.59	-16254.38
QUAEL208		92895.974	780.000	360.00	-4767.59	-16254.38
		93195.974	300.000	360.00	-4467.59	-16254.38
CHVEL205		93290.974	95.000	360.00	-4372.59	-16254.38
		93390.974	100.000	360.00	-4272.59	-16254.38
QUAEL209		94735.974	1345.000	360.00	-2927.59	-16254.38
		95035.974	300.000	360.00	-2627.59	-16254.38
CHVEL206		95220.974	185.000	360.00	-2442.59	-16254.38
		95320.974	100.000	360.00	-2342.59	-16254.38
QUAEL210		95485.974	165.000	360.00	-2177.59	-16254.38
		95785.974	300.000	360.00	-1877.59	-16254.38
INIEZIONE	97663.562		1877.588	360.00	0.00	-16254.38

DAΦNE

Coordinate degli elementi magnetici

	coor. curv.	angolo	lung. mag.	ang. progr.	X	Y	
PL1	INIEZIONE	0.000	0.000	0.00	0.00	16254.38	
	QUAPL101	1877.588	1877.588	0.00	1877.59	16254.38	
		2177.588	300.000	0.00	2177.59	16254.38	
	CHVPL101	2342.588	165.000	0.00	2342.59	16254.38	
		2442.588	100.000	0.00	2442.59	16254.38	
	QUAPL102	2627.588	185.000	0.00	2627.59	16254.38	
		2927.588	300.000	0.00	2927.59	16254.38	
	CHVPL102	4272.588	1345.000	0.00	4272.59	16254.38	
		4372.588	100.000	0.00	4372.59	16254.38	
	QUAPL103	4467.588	95.000	0.00	4467.59	16254.38	
		4767.588	300.000	0.00	4767.59	16254.38	
	QUAPL104	5547.588	780.000	0.00	5547.59	16254.38	
		5847.588	300.000	0.00	5847.59	16254.38	
	SXPPL101	5997.588	150.000	0.00	5997.59	16254.38	
		6097.588	100.000	0.00	6097.59	16254.38	
	CHVPL103	6633.588	536.000	0.00	6633.59	16254.38	
		6833.588	200.000	0.00	6833.59	16254.38	
	DHRPL101	7197.588	364.000	0.00	7197.59	16254.38	
		8407.588	49.50000	1210.000	49.50	8262.58	15763.41
	QUAPL105	9007.588	600.000	49.50	8652.25	15307.16	
		9307.588	300.000	49.50	8847.09	15079.04	
	CHVPL104	9382.588	75.000	49.50	8895.80	15022.01	
		9482.588	100.000	49.50	8960.74	14945.97	
	SXPPL102	9607.588	125.000	49.50	9041.92	14850.92	
		9757.588	150.000	49.50	9139.34	14736.86	
	WGLPL101	9907.588	150.000	49.50	9236.76	14622.80	
		11907.588	2000.000	49.50	10535.65	13101.98	
	QUAPL106	12507.588	600.000	49.50	10925.32	12645.74	
		12807.588	300.000	49.50	11120.16	12417.62	
	CHVPL105	12897.588	90.000	49.50	11178.61	12349.18	
		12997.588	100.000	49.50	11243.55	12273.14	
	SXPPL103	13132.588	135.000	49.50	11331.23	12170.49	
		13282.588	150.000	49.50	11428.64	12056.43	
	QUAPL107	13407.588	125.000	49.50	11509.83	11961.38	
		13707.588	300.000	49.50	11704.66	11733.25	
	DHSPL102	14307.588	600.000	49.50	12094.33	11277.01	
		15517.588	49.50000	1210.000	99.00	12412.65	10148.32
	CHVPL106	15881.588	364.000	99.00	12355.71	9788.80	
		16081.588	200.000	99.00	12324.42	9591.26	
	QUAPL108	16317.588	236.000	99.00	12287.50	9358.17	
		16617.588	300.000	99.00	12240.57	9061.86	
	SXPPL104	16977.588	360.000	99.00	12184.26	8706.30	
		17077.588	100.000	99.00	12168.61	8607.53	
	QUAPL109	17197.588	120.000	99.00	12149.84	8489.00	
		17497.588	300.000	99.00	12102.91	8192.70	
	QUAPL110	17917.588	420.000	99.00	12037.21	7777.87	
		18217.588	300.000	99.00	11990.28	7481.56	
	DHCPL101	18358.588	141.000	99.00	11968.22	7342.30	
		18686.588	328.000	99.00	11916.91	7018.34	
	SPLI1002	19217.588	531.000	99.00	11833.84	6493.87	
		20667.588	-8.74933	1450.000	90.25	11717.03	5050.00

DAΦNE

Coordinate degli elementi magnetici

	coor. curv.	angolo	lung. mag.	ang. progr.	X	Y	
IR1	OFFSET	20667.588	-0.25067	0.000	90.00	11658.28	5050.00
	CHVPI102	20768.088		100.500	90.00	11658.28	4949.50
		21008.088		240.000	90.00	11658.28	4709.50
	SOLI1002	21082.588		74.500	90.00	11658.28	4635.00
		22232.588		1150.000	90.00	11658.28	3485.00
	VALV	22364.988	0.00000	132.400	90.00	11658.28	3352.60
	QUAI1007	23517.588		1152.600	90.00	11658.28	2200.00
		23917.588		400.000	90.00	11658.28	1800.00
	QUAI1006	24267.588		350.000	90.00	11658.28	1450.00
		24667.588		400.000	90.00	11658.28	1050.00
	QUAI1005	24967.588		300.000	90.00	11658.28	750.00
		25267.588		300.000	90.00	11658.28	450.00
	QUAI1004	25567.588		300.000	90.00	11658.28	150.00
		25867.588		300.000	90.00	11658.28	-150.00
	QUAI1003	26167.588		300.000	90.00	11658.28	-450.00
		26467.588		300.000	90.00	11658.28	-750.00
	QUAI1002	26767.588		300.000	90.00	11658.28	-1050.00
		27167.588		400.000	90.00	11658.28	-1450.00
	QUAI1001	27517.588		350.000	90.00	11658.28	-1800.00
		27917.588		400.000	90.00	11658.28	-2200.00
	VALV	29070.188	0.00000	1152.600	90.00	11658.28	-3352.60
	SOLI1001	29202.588		132.400	90.00	11658.28	-3485.00
		30352.588		1150.000	90.00	11658.28	-4635.00
	CHVPI101	30427.088		74.500	90.00	11658.28	-4709.50
		30667.088		240.000	90.00	11658.28	-4949.50
	OFFSET	30767.588	0.25067	100.500	90.25	11599.53	-5050.00

DAΦNE

Coordinate degli elementi magnetici

	coor. curv.	angolo	lung. mag.	ang. progr.	X	Y
PS1	SPLI1001		0.000	90.25	11599.53	-5050.00
		32217.588	8.74933	1450.000	99.00	11482.72
DHCP	DHCP101		531.000	99.00	11399.65	-7018.34
		33076.588		328.000	99.00	11348.34
QUAP	QUAP101		141.000	99.00	11326.28	-7481.56
		33517.588		300.000	99.00	11279.35
SXPP	SXPP101		125.000	99.00	11259.80	-7901.33
		33792.588		150.000	99.00	11236.33
QUAP	QUAP102		125.000	99.00	11216.78	-8172.94
		34217.588		300.000	99.00	11169.85
QUAP	QUAP103		600.000	99.00	11075.99	-9061.86
		35117.588		300.000	99.00	11029.06
CHVP	CHVP101		236.000	99.00	10992.14	-9591.26
		35553.588		200.000	99.00	10960.85
DHSP	DHSP101		364.000	99.00	10903.91	-10148.32
		36907.588	40.50000	990.000	139.50	10430.18
QUAP	QUAP104		600.000	139.50	9973.94	-11383.89
		37807.588		300.000	139.50	9745.82
SXPP	SXPP102		125.000	139.50	9650.77	-11659.91
		38082.588		150.000	139.50	9536.70
CHVP	CHVP102		135.000	139.50	9434.05	-11845.00
		38317.588		100.000	139.50	9358.01
QUAP	QUAP105		90.000	139.50	9289.57	-11968.39
		38707.588		300.000	139.50	9061.45
WGLP	WGLP101		600.000	139.50	8605.21	-12552.90
		41307.588		2000.000	139.50	7084.40
SXPP	SXPP103		150.000	139.50	6970.33	-13949.21
		41607.588		150.000	139.50	6856.27
CHVP	CHVP103		125.000	139.50	6761.22	-14127.81
		41832.588		100.000	139.50	6685.18
QUAP	QUAP106		75.000	139.50	6628.15	-14241.46
		42207.588		300.000	139.50	6400.03
DHRP	DHRP102		600.000	139.50	5943.79	-14825.96
		43797.588	40.50000	990.000	180.00	5034.19
CHVP	CHVP104		364.000	180.00	4670.19	-15161.53
		44361.588		200.000	180.00	4470.19
QUAP	QUAP107		186.000	180.00	4284.19	-15161.53
		44847.588		300.000	180.00	3984.19
SXPP	SXPP104		165.000	180.00	3819.19	-15161.53
		45112.588		100.000	180.00	3719.19
QUAP	QUAP108		122.000	180.00	3597.19	-15161.53
		45534.588		300.000	180.00	3297.19
RFCP	RFCP101		88.000	180.00	3209.19	-15161.53
		47462.588		1840.000	180.00	1369.19
CHVP	CHVP105		105.000	180.00	1264.19	-15161.53
		47667.588		100.000	180.00	1164.19
QUAP	QUAP109		100.000	180.00	1064.19	-15161.53
		48067.588		300.000	180.00	764.19
CHVP	CHVP106		414.193	180.00	350.00	-15161.53
		48581.781		100.000	180.00	250.00
QUAP	QUAP110		100.000	180.00	150.00	-15161.53
		48981.781		300.000	180.00	-150.00

DAΦNE

Coordinate degli elementi magnetici

	coor. curv.	angolo	lung. mag.	ang. progr.	X	Y
PS2	QUAPS201	49595.974	614.193	180.00	-764.19	-15161.53
		49895.974	300.000	180.00	-1064.19	-15161.53
	CHVPS201	51915.974	2020.000	180.00	-3084.19	-15161.53
		52015.974	100.000	180.00	-3184.19	-15161.53
	QUAPS202	52128.974	113.000	180.00	-3297.19	-15161.53
		52428.974	300.000	180.00	-3597.19	-15161.53
	SXPPS201	52550.974	122.000	180.00	-3719.19	-15161.53
		52650.974	100.000	180.00	-3819.19	-15161.53
	QUAPS203	52815.974	165.000	180.00	-3984.19	-15161.53
		53115.974	300.000	180.00	-4284.19	-15161.53
	CHVPS202	53301.974	186.000	180.00	-4470.19	-15161.53
		53501.974	200.000	180.00	-4670.19	-15161.53
	DHRPS201	53865.974	364.000	180.00	-5034.19	-15161.53
		54855.974	40.50000	990.000	220.50	-5943.79
	QUAPS204	55455.974	600.000	220.50	-6400.03	-14436.30
		55755.974	300.000	220.50	-6628.15	-14241.46
	CHVPS203	55830.974	75.000	220.50	-6685.18	-14192.75
		55930.974	100.000	220.50	-6761.22	-14127.81
	SXPPS202	56055.974	125.000	220.50	-6856.27	-14046.63
		56205.974	150.000	220.50	-6970.33	-13949.21
	WGLPS201	56355.974	150.000	220.50	-7084.39	-13851.79
		58355.974	2000.000	220.50	-8605.21	-12552.90
	QUAPS205	58955.974	600.000	220.50	-9061.45	-12163.23
		59255.974	300.000	220.50	-9289.57	-11968.39
	CHVPS204	59345.974	90.000	220.50	-9358.01	-11909.94
		59445.974	100.000	220.50	-9434.05	-11845.00
	SXPPS203	59580.974	135.000	220.50	-9536.70	-11757.32
		59730.974	150.000	220.50	-9650.76	-11659.91
	QUAPS206	59855.974	125.000	220.50	-9745.82	-11578.72
		60155.974	300.000	220.50	-9973.94	-11383.89
	DHSPS202	60755.974	600.000	220.50	-10430.18	-10994.22
		61745.974	40.50000	990.000	261.00	-10903.91
	CHVPS205	62109.974	364.000	261.00	-10960.85	-9788.80
		62309.974	200.000	261.00	-10992.14	-9591.26
	QUAPS207	62545.974	236.000	261.00	-11029.06	-9358.17
		62845.974	300.000	261.00	-11075.99	-9061.86
	QUAPS208	63445.974	600.000	261.00	-11169.85	-8469.25
		63745.974	300.000	261.00	-11216.78	-8172.94
	SXPPS204	63870.974	125.000	261.00	-11236.33	-8049.48
		64020.974	150.000	261.00	-11259.80	-7901.33
	QUAPS209	64145.974	125.000	261.00	-11279.35	-7777.87
		64445.974	300.000	261.00	-11326.28	-7481.56
	DHCPS201	64586.974	141.000	261.00	-11348.34	-7342.30
		64914.974	328.000	261.00	-11399.65	-7018.34
	SPLI2002	65445.974	531.000	261.00	-11482.72	-6493.87
		66895.974	8.74933	1450.000	269.75	-11599.53

DAΦNE

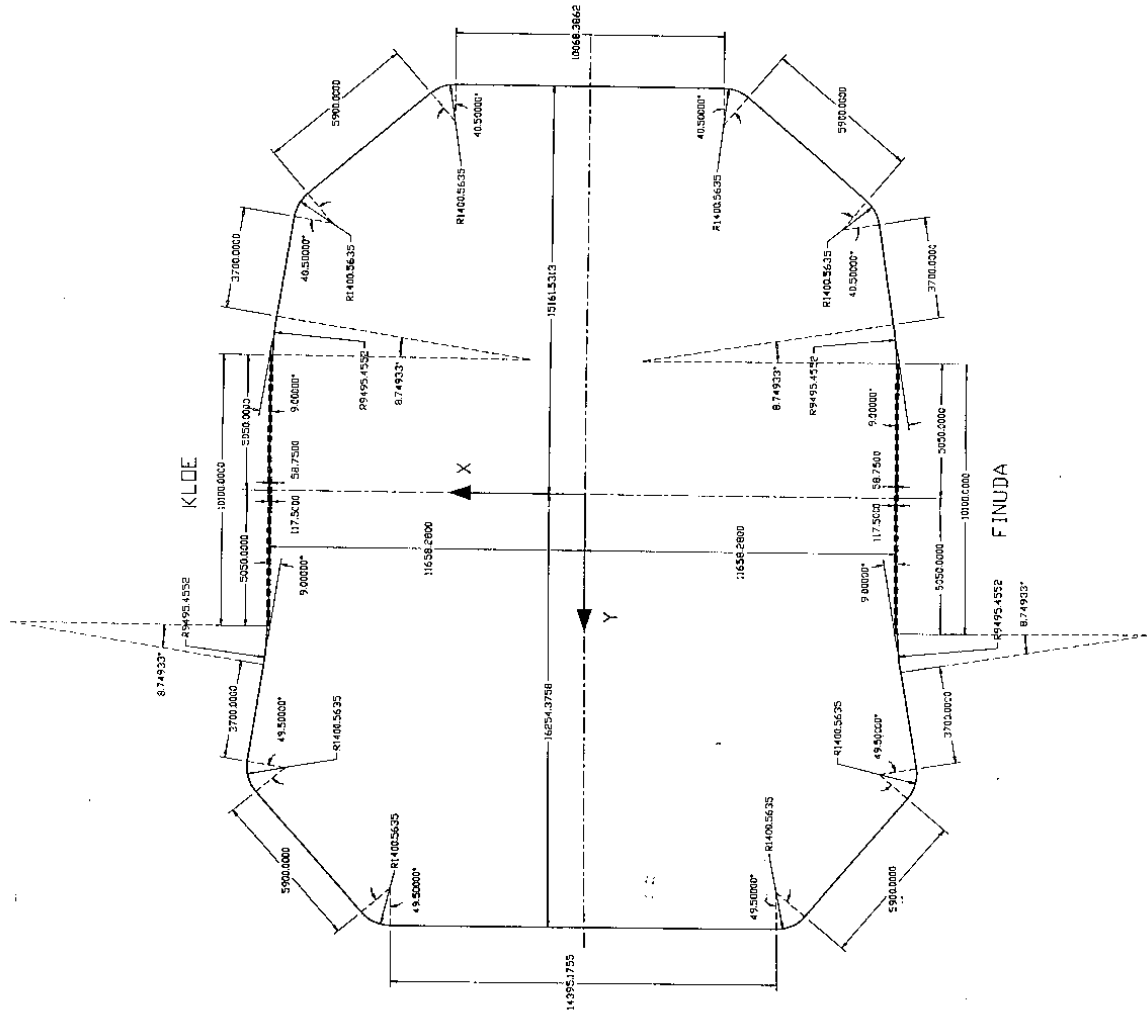
Coordinate degli elementi magnetici

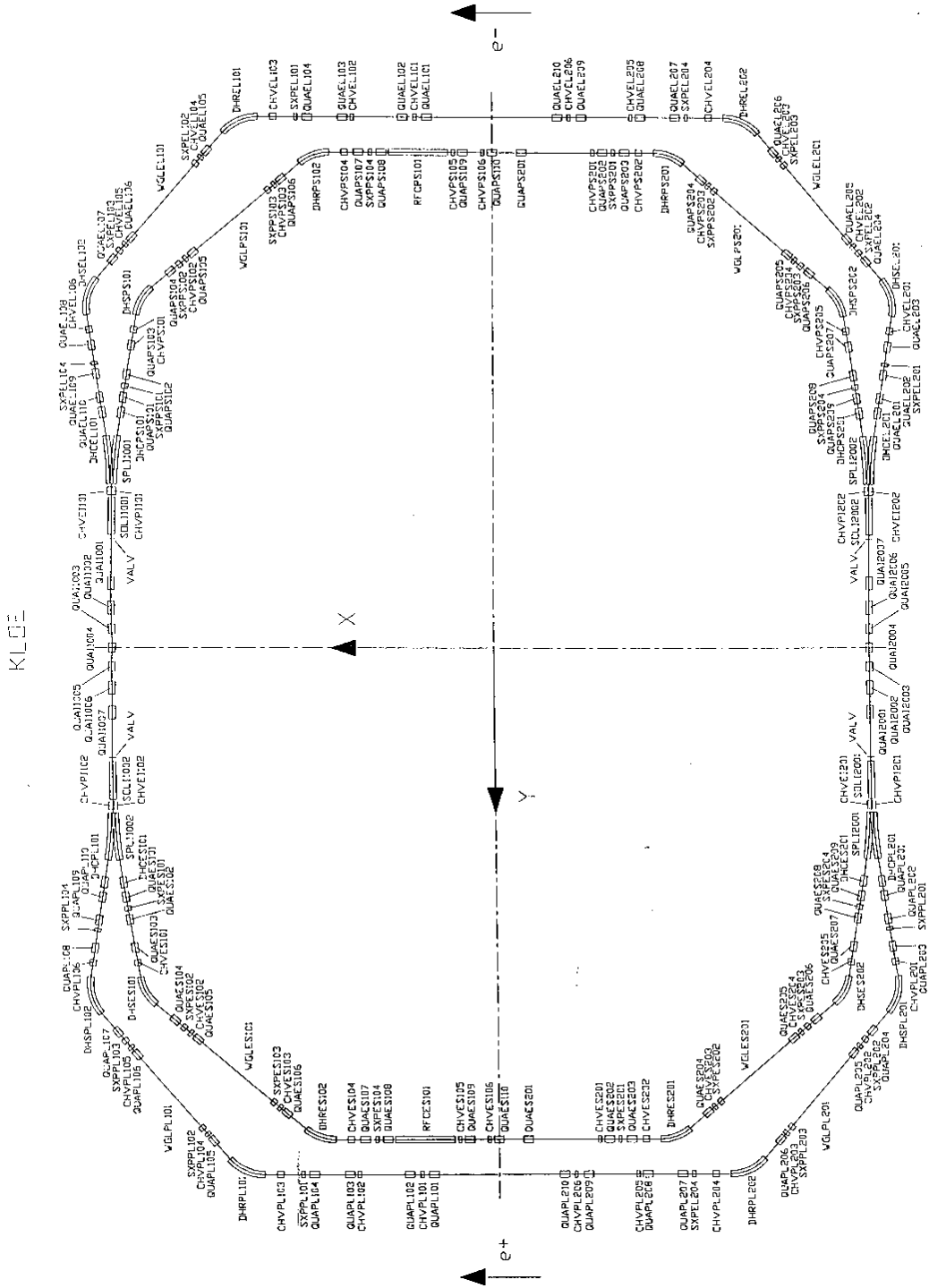
	coor. curv.	angolo	lung. mag.	ang. progr.	X	Y	
IR2	OFFSET	66895.974	0.25067	0.000	270.00	-11658.28	-5050.00
	CHVPI202	66996.474		100.500	270.00	-11658.28	-4949.50
		67236.474		240.000	270.00	-11658.28	-4709.50
	SOLI2002	67310.974		74.500	270.00	-11658.28	-4635.00
68460.974			1150.000	270.00	-11658.28	-3485.00	
VALV	68593.374	0.00000	132.400	270.00	-11658.28	-3352.60	
QUAI2007	69745.974		1152.600	270.00	-11658.28	-2200.00	
	70145.974		400.000	270.00	-11658.28	-1800.00	
QUAI2006	70495.974		350.000	270.00	-11658.28	-1450.00	
	70895.974		400.000	270.00	-11658.28	-1050.00	
QUAI2005	71195.974		300.000	270.00	-11658.28	-750.00	
	71495.974		300.000	270.00	-11658.28	-450.00	
QUAI2004	71795.974		300.000	270.00	-11658.28	-150.00	
	72095.974		300.000	270.00	-11658.28	150.00	
QUAI2003	72395.974		300.000	270.00	-11658.28	450.00	
	72695.974		300.000	270.00	-11658.28	750.00	
QUAI2002	72995.974		300.000	270.00	-11658.28	1050.00	
	73395.974		400.000	270.00	-11658.28	1450.00	
QUAI2001	73745.974		350.000	270.00	-11658.28	1800.00	
	74145.974		400.000	270.00	-11658.28	2200.00	
VALV	75298.574	0.00000	1152.600	270.00	-11658.28	3352.60	
SOLI2001	75430.974		132.400	270.00	-11658.28	3485.00	
	76580.974		1150.000	270.00	-11658.28	4635.00	
CHVPI201	76655.474		74.500	270.00	-11658.28	4709.50	
	76895.474		240.000	270.00	-11658.28	4949.50	
OFFSET	76995.974	-0.25067	100.500	269.75	-11717.03	5050.00	

DAΦNE

Coordinate degli elementi magnetici

	coor. curv.	angolo	lung. mag.	ang. progr.	X	Y	
PL2	SPLI2001	76995.974	0.000	269.75	-11717.03	5050.00	
		78445.974	-8.74933	1450.000	261.00	-11833.84	6493.87
	DHCPL201	78976.974	531.000	261.00	-11916.91	7018.34	
		79304.974	328.000	261.00	-11968.22	7342.30	
	QUAPL201	79445.974	141.000	261.00	-11990.28	7481.56	
		79745.974	300.000	261.00	-12037.21	7777.87	
	QUAPL202	80165.974	420.000	261.00	-12102.91	8192.70	
		80465.974	300.000	261.00	-12149.84	8489.00	
	SXPPL201	80585.974	120.000	261.00	-12168.61	8607.53	
		80685.974	100.000	261.00	-12184.26	8706.30	
	QUAPL203	81045.974	360.000	261.00	-12240.57	9061.86	
		81345.974	300.000	261.00	-12287.50	9358.17	
	CHVPL201	81581.974	236.000	261.00	-12324.42	9591.26	
		81781.974	200.000	261.00	-12355.71	9788.80	
	DHSPL201	82145.974	364.000	261.00	-12412.65	10148.32	
		83355.974	49.50000	1210.000	310.50	-12094.33	11277.01
	QUAPL204	83955.974	600.000	310.50	-11704.66	11733.25	
		84255.974	300.000	310.50	-11509.82	11961.38	
	SXPPL202	84380.974	125.000	310.50	-11428.64	12056.43	
		84530.974	150.000	310.50	-11331.23	12170.49	
	CHVPL202	84665.974	135.000	310.50	-11243.55	12273.14	
		84765.974	100.000	310.50	-11178.61	12349.18	
	QUAPL205	84855.974	90.000	310.50	-11120.16	12417.62	
		85155.974	300.000	310.50	-10925.32	12645.74	
	WGLPL201	85755.974	600.000	310.50	-10535.65	13101.98	
		87755.974	2000.000	310.50	-9236.76	14622.80	
	SXPPL203	87905.974	150.000	310.50	-9139.34	14736.86	
		88055.974	150.000	310.50	-9041.92	14850.92	
	CHVPL203	88180.974	125.000	310.50	-8960.74	14945.97	
		88280.974	100.000	310.50	-8895.80	15022.01	
	QUAPL206	88355.974	75.000	310.50	-8847.09	15079.04	
		88655.974	300.000	310.50	-8652.25	15307.16	
	DHRPL202	89255.974	600.000	310.50	-8262.58	15763.41	
		90465.974	49.50000	1210.000	360.00	-7197.59	16254.38
	CHVPL204	90829.974	364.000	360.00	-6833.59	16254.38	
		91029.974	200.000	360.00	-6633.59	16254.38	
	SXPPL204	91565.974	536.000	360.00	-6097.59	16254.38	
		91665.974	100.000	360.00	-5997.59	16254.38	
	QUAPL207	91815.974	150.000	360.00	-5847.59	16254.38	
		92115.974	300.000	360.00	-5547.59	16254.38	
	QUAPL208	92895.974	780.000	360.00	-4767.59	16254.38	
		93195.974	300.000	360.00	-4467.59	16254.38	
	CHVPL205	93290.974	95.000	360.00	-4372.59	16254.38	
		93390.974	100.000	360.00	-4272.59	16254.38	
	QUAPL209	94735.974	1345.000	360.00	-2927.59	16254.38	
		95035.974	300.000	360.00	-2627.59	16254.38	
	CHVPL206	95220.974	185.000	360.00	-2442.59	16254.38	
		95320.974	100.000	360.00	-2342.59	16254.38	
	QUAPL210	95485.974	165.000	360.00	-2177.59	16254.38	
		95785.974	300.000	360.00	-1877.59	16254.38	
	INIEZIONE	97663.562	1877.588	360.00	0.00	16254.38	





KLOE

FINUDA